

CERTIFICATE OF LOCATION OF GOVERNMENT CORNER

NORTH QUARTER Corner of Section 2, Township 106, Range 39, 5TH P.M.

STATE OF MINNESOTA, County of MURRAY

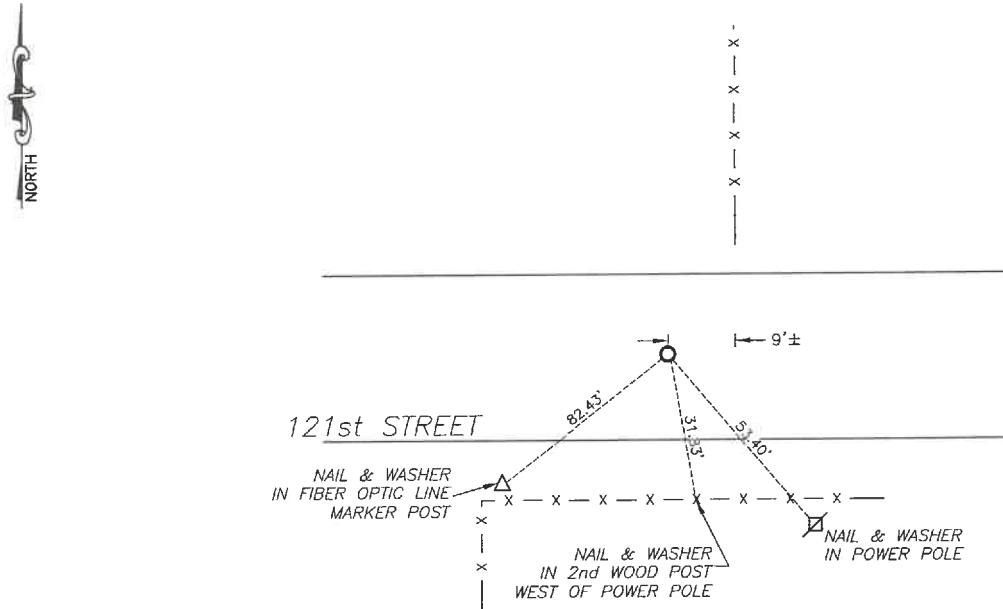
At the corner location shown on the sketch:

☒ On 7/22/2024 found a Large field stone with smaller stones around it.
DATE

☒ left monument as found, ☐ lowered monument, ☐ removed monument (explain)

☒ On 1/16/2025 placed a 5/8" iron with seal #43844 over top of the stone
DATE

SKETCH OF REFERENCE TIES



Murray County
Coordinate System NAD83 (1996)
N: 163498.106
E: 572117.277

WGS84
LAT: 44°01'18.8474"
LON: -95°29'33.0874"

Statement of evidence relative to this corner location is on back of page.

I hereby certify that this document and the data contained herein was prepared by me or under my direct supervision.

Daniel L. Buettel
Daniel L. Buettel
License No. 43844

3/12/2025
DATE

MAR 13 2025

Karen Brann
MURRAY COUNTY RECORDER

Statement of Evidence

NORTH QUARTER CORNER SECTION 2, T106N, R39W OF THE 5th P.M.

In September 1858, W.J. Neely surveyed the east township line.

In July of 1861, J.W. Myers surveyed the north, south, and west township lines.

In August of 1861, Wellman & Smoot subdivided the township.

A survey from September of 1892 shows a marked stone at the corner.

County records from July 17, 1973 shows a field stone was found at the corner and a steel pin was placed over top of it.

A survey by Bueltel-Moseng Land Surveying from June 22, 2021 shows a $\frac{1}{2}$ " iron at the corner.

On July 22, 2024 Bueltel-Moseng Land Surveying dug underneath the iron and found a large field stone with several smaller stones around it. We placed a $\frac{1}{2}$ " x 12" iron on the North side of the stone for locating purposes.

On January 16, 2025 we set a $\frac{5}{8}$ " iron with seal #43844 over top of the stone.